

# ARB AIR LOCKER *Air Operated Locking Differentials*

## RD210 MITSUBISHI 8", 28 SPL, RR

### Specs:

Axle Spline	28 tooth, Ø30.5mm [1.20"]
Ratio Supported	All
Ring Gear ID	124.0mm [4.88"]
Ring Gear Bolts	10 bolts on Ø150mm [5.91"]
Ring Gear Torque	85Nm [63 ft-lb]
Backlash	0.13-0.18mm [0.005-0.007"]
Bearing Cap Torque	60Nm [44 ft-lb]

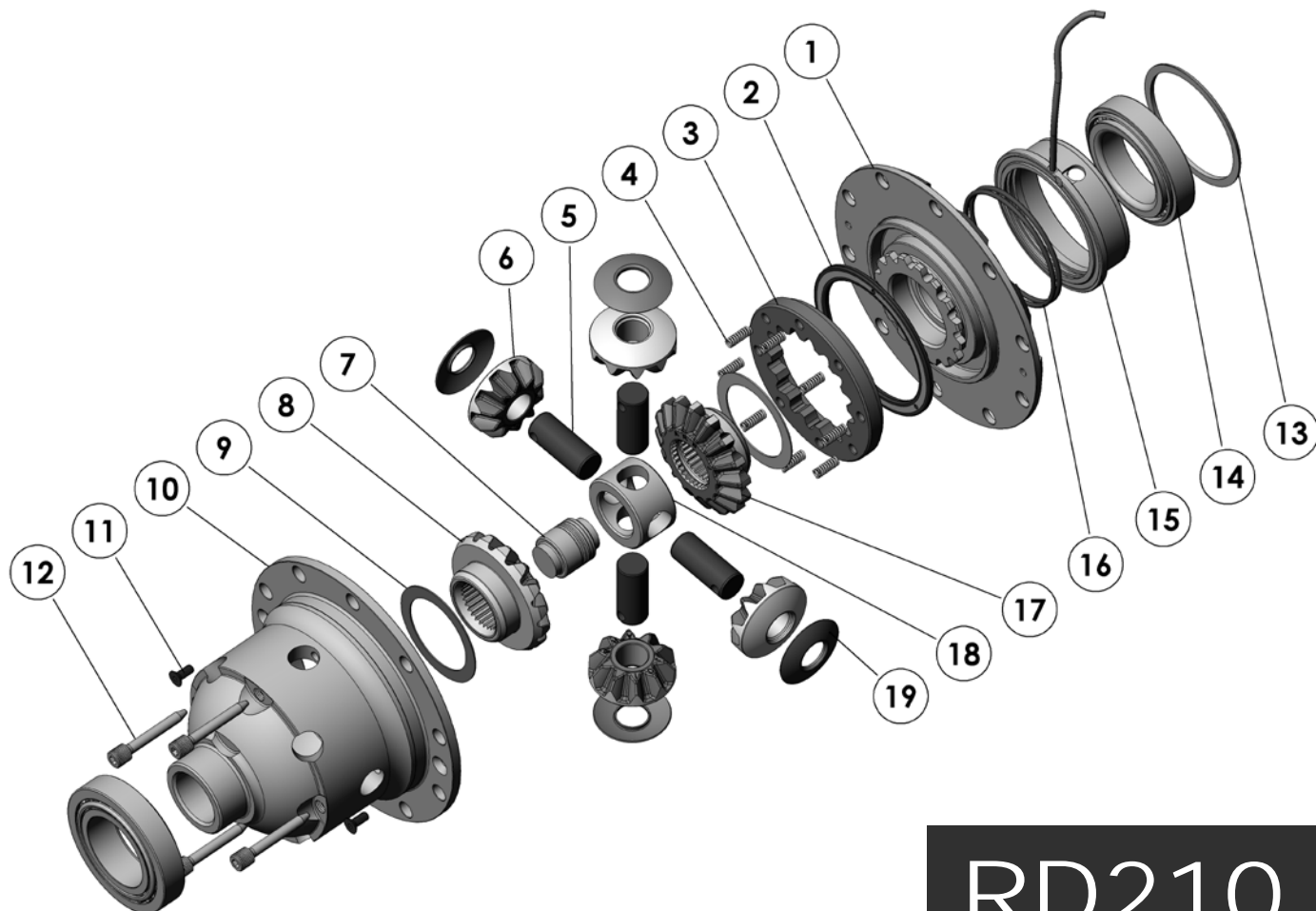
### Notes:

- 1 For replacement O-rings use only BS148 Viton 75.
- 2 For replacement bearing use Timken part # LM503349 / LM503310.
- 3 Available only as complete 6 gear set # 728J041

For the larger 9" Mitsubishi 28 spline rear differentials with 12 ring gear bolts refer to RD212 ([Section 2.212](#)).

ITEM #	QTY	DESCRIPTION	PART #	NOTES
1	1	FLANGE CAP	028507	
2	1	BONDED SEAL	160701	
3	1	CLUTCH GEAR	050802	
4	8	RETURN SPRING	150113	
5	4	SHORT CROSS SHAFT	061402	
6	4	PINION GEAR	728J041	3
7	1	THRUST BLOCK	110512	
8	1	SIDE GEAR	728J041	3
9	2	SIDE GEAR THRUST WASHER	151011	
10	1	DIFF CASE	013119	
11	2	COUNTERSUNK SCREW	200213	
12	4	RETAINING PIN	120601	
13	1	MASTER SHIM	150320	
14	1	TAPERED ROLLER BEARING	160117	2
15	1	SEAL HOUSING	081702	
16	2	O-RING	160233	1
17	1	SPLINED SIDE GEAR	728J041	3
18	1	SPIDER BLOCK	070503	
19	4	PINION THRUST WASHER	151112	
*	1	AIR LINE (5mm DIA X 6m LONG)	170301	
*	1	BULKHEAD FITTING KIT (O-RING TYPE)	170111	
*	1	PUSH-IN FITTING (5mm to 1/8" BSPP)	170201	
*	1	SOLENOID VALVE (12V)	180103	
*	10	CABLE TIE	180301	
*	1	NIPPLE (1/8" to 1/8" BSPT)	170501	
*	1	SWITCH	180209	
*	1	SWITCH COVER (REAR)	180211	
*	1	BUMPER STICKER	210102	
*	1	WARNING STICKER	210101	
*	1	OPERATING & SERVICE MANUAL	210200	
*	1	INSTALLATION GUIDE	2102210	

\* Not illustrated in exploded view.



# RD210

