

### Introduction

#### ► Feature

Rated line lift:	900 kg / 1,984 lb single line at the top layer of rope
Line speed :	37 mpm / 121 fpm single line at the top layer of rope
Operation pressure:	140 bar with maximum back pressure on return line of 5 bar
Brake:	Multi-disc brake and counterbalance valve providing full 100% braking
Recommended wire rope:	8 mm ( 5/16" ) x 68 m ( 223' ) 1,960 N/mm <sup>2</sup> grade a minimum breaking strength of 44.7 KN required
Hydraulic system:	PTO/power take off unit driven pump

#### ► Unpacking

- Assembly..... 1pc
- Counterbalance valve..... 1pc

#### ► Read this manual carefully

You should carefully read and understand this manual before operating it. Careless operation may result in personal injury hazards or property damage.

#### ► Information requesting or parts ordering

Please specify the followings information:

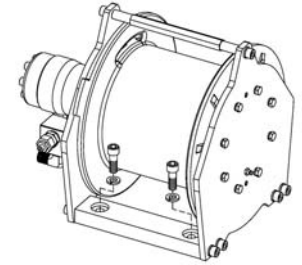
- PN
- Part description
- Serial number
- Replacement part number
- Quantity for each part

### Installation

Before using the winch, make sure all components have no corrosion or damaged; the environment should be clear and dry.

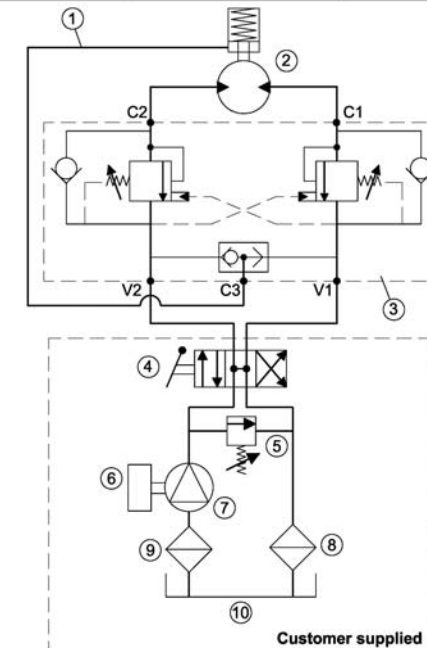
#### ► Mounting

- Hoist shall be mounted on a flat and hard surface.
- Hoist should be mounted as closed to center and as perpendicular as possible to the direction of the line pull.
- Wire rope shall be wound in an under-wound orientation only.
- Four (4) M12 , 8.8 grade w/76 N-m torque setting (maximum) high tensile steel bolts must be used in order to sustain the loads imposed on the winch mounting.



#### ► Hydraulic System

V1 Lowering branch	V2 Hoisting branch	C3 Connection to brake
① Brake	② Hoist	③ Two-way counter balance valve
④ Control valve	⑤ Pressure relief valve	⑥ PTO electro control box
⑦ Hydraulic pump	⑧ Return filter	⑨ Suction filter
⑩ Oil tank		



( Powered by PTO / power take off unit driven pump )

The installation of the counterbalance valve supplied is required for 100% braking

## Warning

- The rated line pull and speed are based on the first layer of rope on the drum.
- The rope winding on the drum shall remain 5 wraps from the drum.

## Warranty

Comeup Industries Inc. takes the responsibility for all parts and components to be free from defects in materials and workmanship appearing under normal use for one year from the date of purchase.

## Parts List

Item No.	Description	Part No.	Qty
1	Hydraulic motor kit for OMP-160	882879	1
2	Motor fix plate kit	882885	1
3	Multi-disc brake kit	882886	1
4	Drum bushing	882931	2
5	Metallic gasket	882932	2
6	Drum kit	882887	1
7	Thimble	882933	1
8	1 <sup>st</sup> pinion kit	882891	1
9	1 <sup>st</sup> ring gear kit	882892	1
10	Gearbox fix plate kit	882893	1
11	Tie bar kit	882894	1
12	Base plate kit	882895	2

## Assembly

